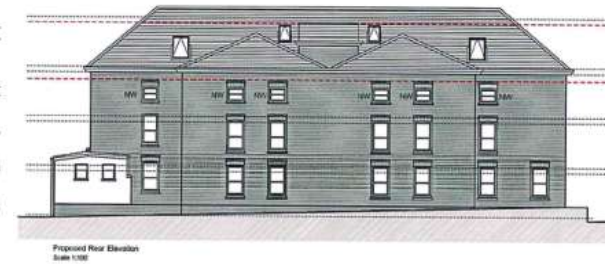




90-92 Wallasey Road, Wirral, Wallasey, CH44 2AE
propcentre@aol.com
www.propertycentre.org
Sales: 0151 639 0770
Lettings: 0151 639 7500

Eaton Court



128 – 130 Grove Road, Wallasey

Wirral

Eaton Court, 128-130 Grove Road, Wallasey

Location

The development is situated in the historical village of Wallasey.

Wallasey Village is the oldest inhabited part of Wallasey's three townships – which were later amalgamated in 1910 by the local council.

Eaton Court is situated on Grove road, which is also locally recognised for its period feature properties and buildings dating back to the early 1900's, which gives the location a combined feeling of old and new.

Grove road is a highly regarded residential area, ideally placed for excellent transport links. The fantastic amenities in New Brighton are a short drive away.



Eaton Court, 128-130 Grove Road, Wallasey

Description

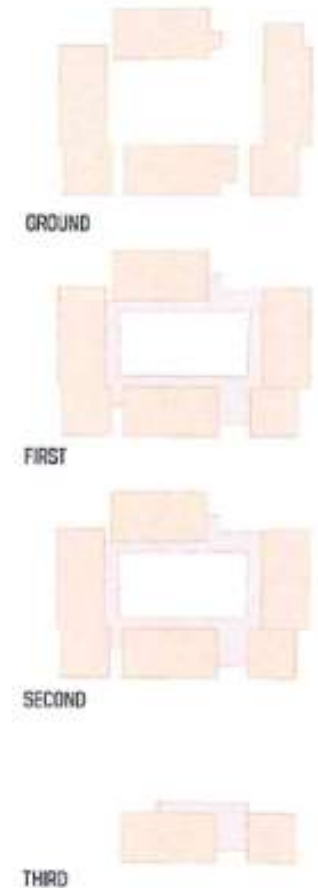
Coming to the market soon.....

A stunning development of one and two bedroom apartments – built to compliment the local architecture and surrounding areas.

Eaton Court promises to deliver a superior contemporary feel with Juliet balconies / French doors, yet retaining character. The development is set back in a private setting with communal parking and gardens.

Completion

Completion date approx.. Summer 2018.

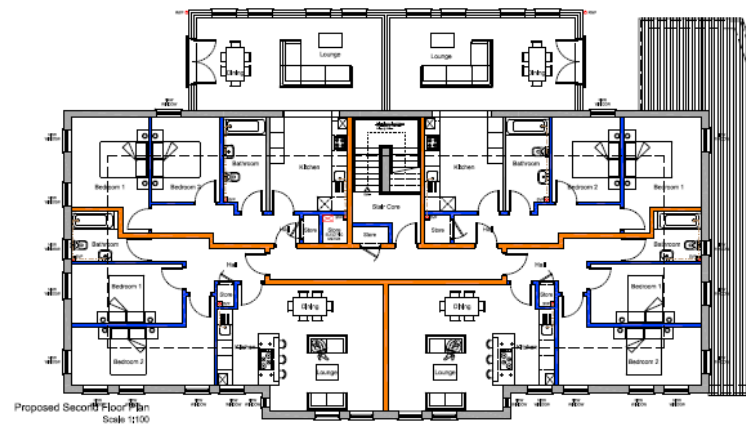
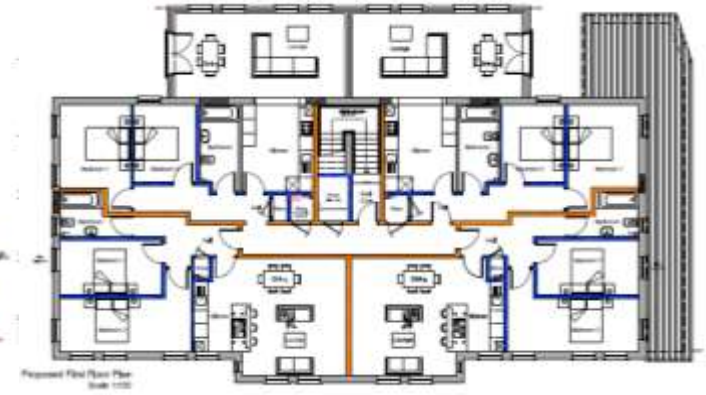


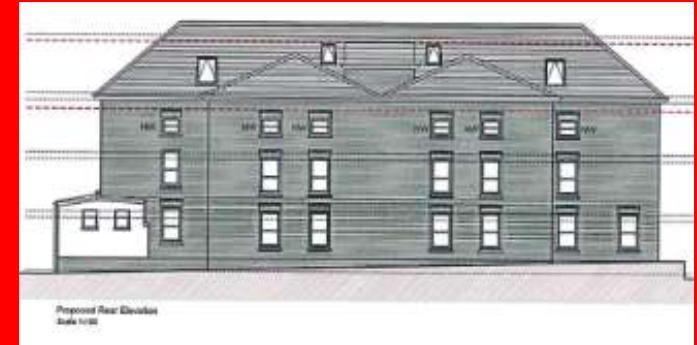
Eaton Court, 128-130 Grove Road, Wallasey

Apartments – Starting from £150,000

Located across three floors; the apartments would typically consist of an open plan Kitchen, Lounge and Diner with one / two bedrooms and bathroom.

The plot would consist of communal parking and garden space for residence.





Eaton Court

128 – 130 Grove Road

Wallasey

Wirral

90-92 Wallasey Road, Wirral, Wallasey, CH44 2AE
propcentre@aol.com
www.propertycentre.org
Sales: 0151 639 0770
Lettings: 0151 639 7500